

W e l c o m e



St. Mary's Community Preschool

A Parish Day School
Where all Children are
Embraced, Taught and Inspired

Admissions Policy

Welcome!

Mommy & Me Jubilee (1-24mos)

Two's (age 2)

Preschool (age 3)

PreK (age 4)

Extended Care (age 2-5)

*age by December 1st

Transition to School

Class play date before the start of school.

Parent Orientation

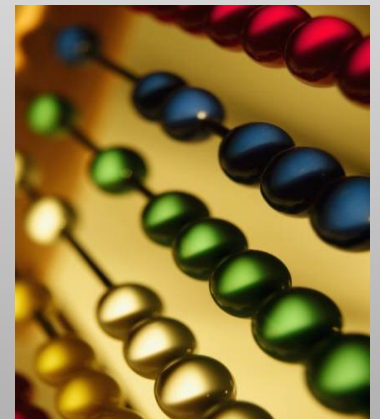
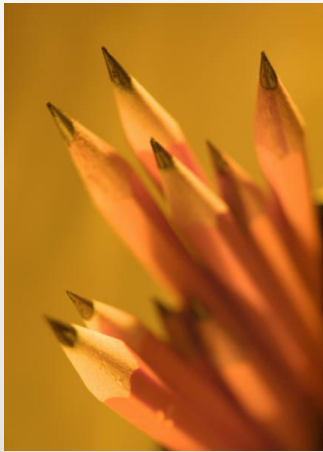
Back to School Night

Safe and Secure

- School Personnel
- Drop Off and Pick Up
- Access to Building
- Access to School
- CPR Certification
- Cleanliness



How Will My Child Learn?



New York State Pre-K Learning Standards

Adopted by the Board of Regents January 2011

- Purpose: to align standards, assessments, curriculum and instruction...across a comprehensive and inclusive span of Pre-K to 16.
- http://www.p12.nysed.gov/ciai/common_core_standards/
- A goal at St. Mary's Preschool is to exceed these standards.

Preschool Sample Schedule

- 9:00 Free Play
- 9:15 Morning Meeting
- 9:35 Choice Time
- 10:00 Lesson
- 10:25 Snack
- 10:40 Outside
- 11:00 Story Time
- 11:15 Specials
- 11:35 Goodbye Circle
- 11:45 Dismissal



Sample Schedule

Extended Care

AM Routine

- 7:30am
- 7:50am
- 8:15am
- 8:30am
- 8:45am

Inside Play Time

Outside or Inside Large Motor Play

*Breakfast snack

Bathroom

Clean up/Prep for Preschool

PM Routine

- 12:00pm
- 12:25pm
- 1:05pm
- 1:20pm
- 2:20pm
- 2:30pm
- 2:45pm
- 3:00pm

*Lunch/Bathroom

Large Motor Play

Story Time

Nap/Rest

*Snack/Bathroom

Playtime

Clean up /Pack Up

Dismissal

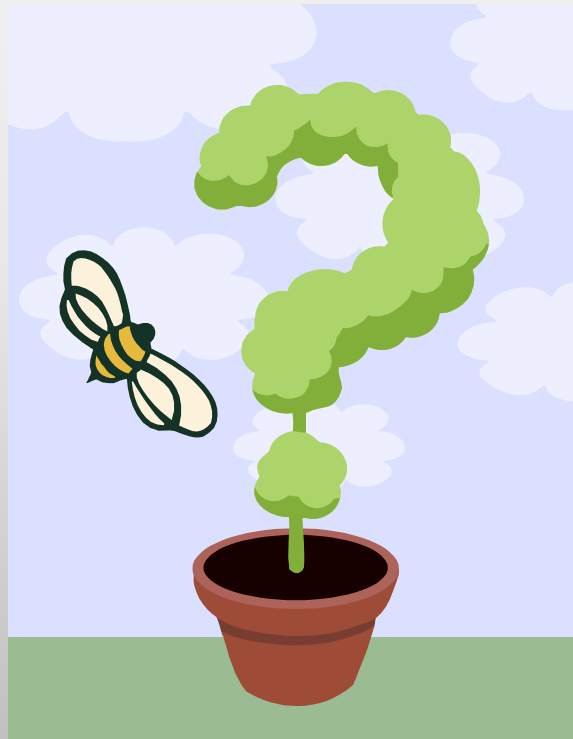


**Provided by parent*

Frequently Asked Questions

- How can I as a parent/caregiver be involved?
 - In the classroom or from home
- How can I communicate with the school personnel?
 - Email, phone, newsletters
- Is there extended care? Yes
 - 7:30am – 9:00am and 12:00pm – 2:45pm
- Will I receive progress reports? Yes
- Can I celebrate my child's birthday? Yes
- What supplies will my child need? A backpack, smock and a binder with plastic sleeves
- Who supplies snack? Parent snack calendar

Any Additional Questions?



Contact Information



Contact Information

St. Mary's Community Preschool

St. Mary's-In-Tuxedo Episcopal Church

10 Fox Hill Road

PO Box 637

Tuxedo Park NY 10987

845-351-2389 (Telephone)

845-351-2433 (Fax)

www.stmarysintuxedo.org

preschool@stmarysintuxedo.org

Thank you!